

Mountain Line for Saunaply

RoHol

The Austrian Wood Composer

Attractive slate surfaces with real natural stone.

The use of genuine natural materials is currently in trend and there are endless possibilities for featuring, not just wood, but also natural stone in various interiors, especially in saunas and spas. As such Mountain Line presents to you a strikingly beautiful range of slate surfaces that have been tried and tested in the extreme conditions found in saunas, spas and infrared cabins.

» **Manufacturer's instructions:** Due to the extreme temperatures and humidity levels, the atmosphere in saunas is almost incomparable with any other interior. Extraordinary projects require both extraspecial care when it comes to processing and also experience and foresight when it comes to planning. Due to the wide range of different sauna constructions and installations as well as the absence of any universally applicable standards we would recommend carefully examining the suitability of the respective processing criteria and working in line with those. Likewise, the processing of original RoHol Saunaply Mountain Line panels is easily possible when following guidelines.

Product information:

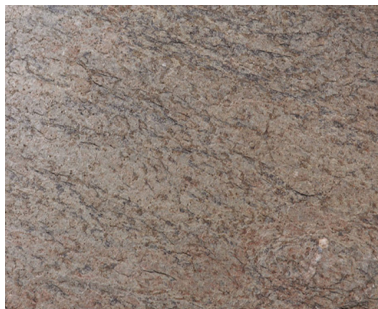
- » **Size:** 2420 x 1200 mm,
Thickness: 17 mm (+2/-1 mm)
- » **Design:** currently 4 options in stock Rock, Cliff, Stone and Glacier. Further options available on request.
- » **Material:** Saunaply panels and genuine stone on a thin layer of resin and fiberglass. Further substrates and thicknesses are available on request.
- » **Bonding:** D4 according to DIN EN 204 or EN 314 Part 2 Class 2. The challenging climatic conditions were simulated over a period of weeks in an internal test. The resulting formaldehyde emissions were significantly lower than the given threshold for saunas (according to Austrian standard ÖNORM M62191).
- » **Areas of application:** Saunas and spas, infrared and heat cabins, ovens, wall and ceiling, cladding, various interiors etc.



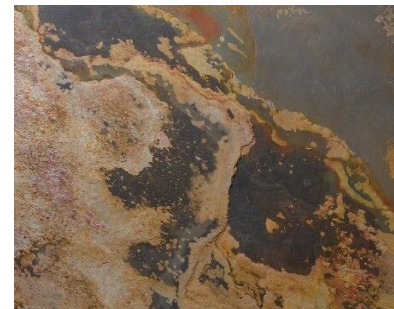
CLIFF



ROCK



STONE



GLACIER

Advantages

- » Genuine natural stone
- » The panels are relatively lightweight (8,5 kg/m² compared to solid natural stone)
- » Resource-saving processing
- » Large-scale formats without joints
- » Standard programme available immediately
- » Edging material also available without substrates
- » Individual range of colours on request

